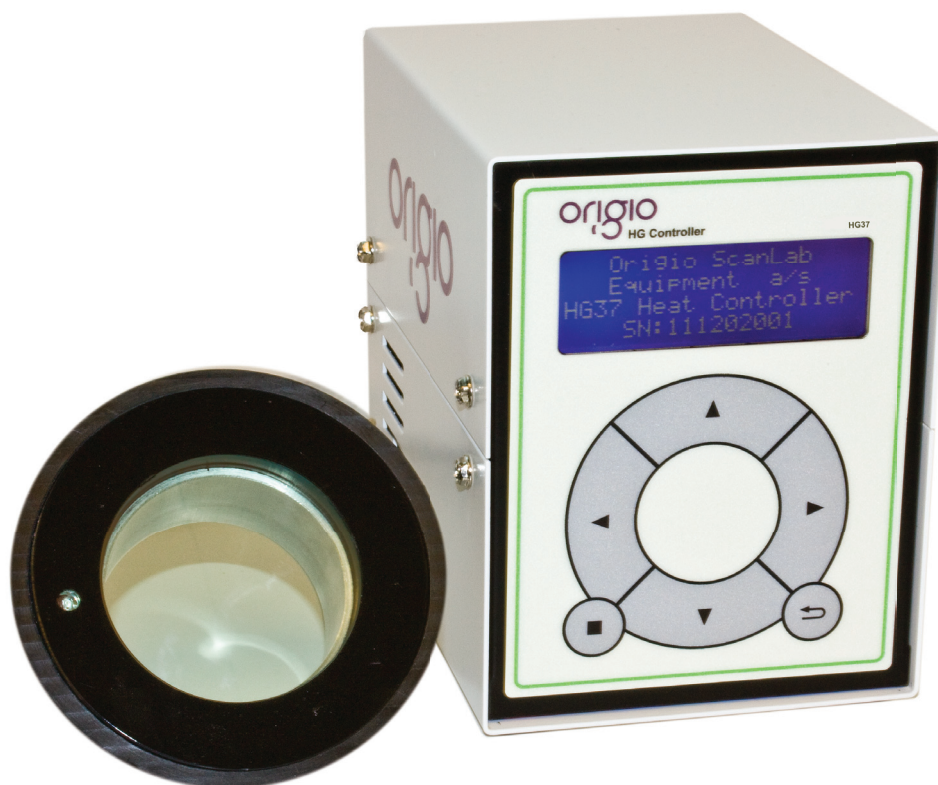


Heated Glass Stage HG37

Maintaining optimal temperature

- Full temperature control in increments of 0.01 °C
- Unique temperature accuracy of ± 0.1 °C
- Visual indication of warming up, safe operation and alarm states with LED light and control box
- One controller for up to 2 glass stages
- Data logging via USB



Heated Glass Stage HG37

Maintaining optimal temperature

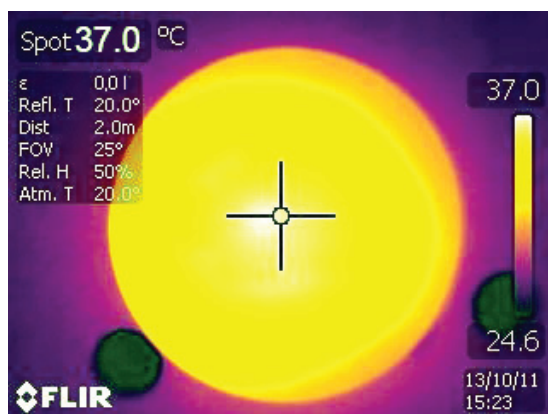
Ensuring constant temperature of the heated glass area incorporated into the workstations stainless steel surface.

Maintaining the optimal temperature

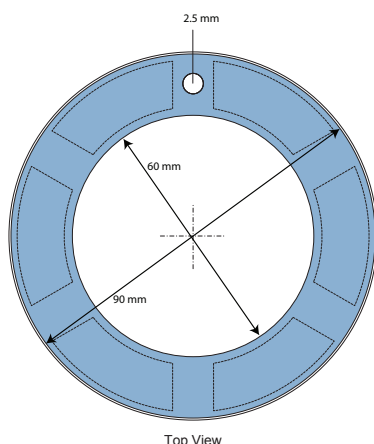
The design and the material selection of the Heated Glass Stage has been carefully thought out to retain and maintain the temperature at an even level and avoid high fluctuations.

4 mm thick glass is toughened, coated enameled and baked at high temperature to give durable surface area across the glass.

The thermal image below indicates a constant and even temperature across the whole glass surface.



Heat pattern of the glass



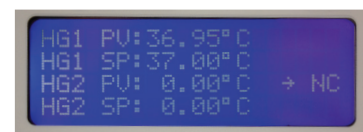
Top View

Control

- A tri-state LED is incorporated within the ring, giving instant indication of warming up, safe operation and alarm state (red: too hot; green: ok; blue: cold)



- The temperature of each glass can be adjusted individually from the key pad, even when two glasses are connected



- Real time view of temperature status
- Data logging via USB, historical data can be saved onto an output file on a USB storage device
- The controller enclosure is placed under the table plate for easy access without taking up work space

Specifications

Control Box:

Dimensions (HxLxW): 144X162X112 mm
Weight 1.8 kg

Glass:

Diameter: 90 mm

Ref. No.

9.002.120.150

Heated Glass Stage HG37 - single
(one glass and a control box)

9.002.120.152

Heated Glass Stage HG37 - dual
(two glasses and a control box)

Find more information

On www.origio.com, you can read more information and find out who your local ORIGIO distributor is.